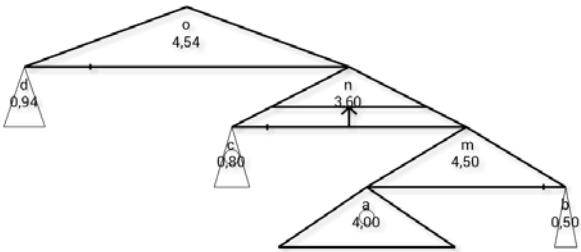


FORMUGRAM: GRAPHICAL REPRESENTATION OF CLINICAL EQUATIONS

1. Calcium correction:

$$\text{Ca corrected: Ca pl} + 0,8 \cdot (4 - \text{Albúmina})$$



2. Excreción Urinaria de Creatinina Normal [mg/kg/d]:

$$H = 28 - (0,2 \cdot \text{age})$$

